



JBRPC

JNTUH (DQ)

JOGINPALLY B.R. PHARMACY COLLEGE

(Approved by PCI & AICTE New Delhi. Affiliated to JNTU, Hyderabad)

ISO 9001:2015 Certified, Estd-2007

Bhaskar Nagar, Yenkapally (V), Moinabad (M), R.R. District, Hyderabad - 500 075. TS

Phone : 9573544966 / 9052073434 / 9966883793 / 08413-235058

EAMCET CODE : JBCP

Action taken report

Academic year : 2022-2023

Date : 10/04/2023

IQAC, JBRPC has conducted a staff meeting with chairmanship of Principal to take up the proposals and action plans to be implemented for the feed back analysis in accordance with the demands of stake holders.

IQAC has made a policy that the feedback from the stakeholders is considered positive only if it is above 90%. Otherwise necessary action plan has to be implemented for further improvement.

As Joginpally B R Pharmacy College is an affiliated college we don't have freedom to change or update the curriculum as per the student demands. We will convey the feedback to the University and try to take resolutions within our limits.


FEED BACK SCALE

1	2	3	4
Poor	Average	Good	Excellent


PRINCIPAL

JOGINPALLY B.R. PHARMACY COLLEGE
Yenkapally (V), Moinabad (M),
R.R. Dist., Hyderabad-500 075. T.S.





Dr. M. ANITHA
M.Pharm., Ph.D.
PROFESSOR
CPS, IST, JNT University
Kukatpally, Hyderabad-500 095.

Sponsored by Joignpally B.R. Educational Society

Head Office : 6-3-248/1/1/A, 4th Floor, Bhaskar Plaza, Road No. 1, Banjara Hills, Hyderabad - 500 034.
Phone : 040-23391979, Fax : 040-23304036, Website: www.jbrpc.edu.in, Email: principal@jbrpc.edu.in

Name of the stake holder: Student

S.NO.	QUESTION	OVER ALL FEEDBACK	FEEDBACK PERCENTAGE	ACTION TAKEN
1.	Does the curriculum meet present day requirements of industry?	EXCELLENT	98	We appreciate the feedback and upgrade the students with knowledge and skills through Add on and value added courses.
2.	How do you rate the overall learning value in terms of knowledge, concepts, Analytical abilities and broadening perspectives?	EXCELLENT	95	As the feedback is positive , it is instructed to keep up the same momentum
3.	Is there a good balance between theory and laboratory components in the curriculum?	EXCELLENT	96	We are happy with the feedback and still we will plan s hands on training programmes to improve student practical skills beyond syllabus.
4.	Did the curriculum incorporate any curricular enrichment practices such as add-on courses, instrumental training, soft-skill modules	EXCELLENT	98	We appreciate the feedback from students and we will assure more add on courses as per current requirements of Industry .
5.	Were the classrooms and other learning spaces well-maintained and equipped with necessary facilities?	EXCELLENT	98	We will continuously work for providing all the facilities required for quality teaching and learning.
6.	How would you rate the availability and accessibility of resources such as libraries, computer, pharmacy labs and study areas?	EXCELLENT	96	We will upgrade all the resources as per the requirements of the students.
7.	How responsive and helpful were the administrative staff and support services in addressing your needs and concerns	EXCELLENT	98	It is instructed that same support should be extended by all the admin staff.
8.	Does the college provide adequate opportunities for participation in co-curricular and extracurricular activities?	GOOD	92	We value the feedback and we will conduct more sports in the coming years.


PRINCIPAL
JOGINPALLY B.R. PHARMACY COLLEGE
 Yenkapally (V), Moinabad (M),
 R.R. Dist., Hyderabad-500 075. T.S.



Name of the stake holder: Teacher


S.NO.	QUESTION	OVER ALL FEEDBACK	FEEDBACK PERCENTAGE	ACTION TAKEN
1.	Does the curriculum enable to develop problem solving ability and innovative thinking among students?	GOOD	94	We appreciate the feedback and upgrade the students with knowledge and skills through capacity building courses.
2.	Is your curriculum sufficient to bridge the gap between industry standard/ current global scenarios and academics?	GOOD	94	As the feedback is positive , it is instructed to keep up the same momentum
3.	How do you rate balance between theory and lab/ practical of the course?	EXCELLENT	97	We are happy with the feedback and still we plan mini projects and hands on training programmes to improve experiential learning skills beyond syllabus.
4.	How would you rate the student flexibility in learning new techniques, adopting new ideas etc.?	GOOD	91	We appreciate the feedback from students and we will assure more add on courses as per current requirements of Industry .
5.	How do you rate the potential of the curriculum to support the need of society in terms of ethics, healthcare, environment sustainability?	GOOD	94	Along with curriculum we have planned value added ,soft skill courses, workshops and awareness programmes for the holistic development of the student.
6.	Does the institution provide opportunities for faculty members for professional development and enhancement of teaching skills?	EXCELLENT	97	We will extend our consistent support financially and morally for the development of faculty skills and knowledge.
7.	Are the classrooms and other teaching spaces well-maintained and equipped with necessary facilities?	GOOD	94	We value the feed back and we will update the infrastructure facilities as per the needs.
8.	How would you rate the availability and accessibility of resources such as libraries, research labs and teaching aids?	GOOD	91	We will update and provide all the teaching and learning resources as per the requirements.

Jogin
PRINCIPAL
JOGINPALLY B.R. PHARMACY COLLEGE
 Yenkapally (V), Moinabad (M),
 R.R. Dist., Hyderabad-500 075. T.S.



Name of the stake holder: Alumni

S.NO.	QUESTION	OVER ALL FEEDBACK	FEEDBACK PERCENTAGE	ACTION TAKEN
1.	Does the programme attributes to overall personality development/professional skills/employability?	GOOD	93	We appreciate the feedback and we will continuously work for overall development of the student as per current needs.
2.	How do you rate the learning experience in terms of their relevance to the real life application?	GOOD	93	It is instructed to conduct more mini projects to enhance experiential learning.
3.	Does the program inculcates theoretical concept of syllabus in practical and theory?	EXCELLENT	96	We are happy with the feedback and still we will plan hands on training programmes to improve student practical skills beyond syllabus.
4.	How would you rate the relevance of the courses that you have studied in the college in relation to your current job/occupation?	EXCELLENT	96	We appreciate the feedback and we will assure more add on courses to bridge gap between industry and academia if any.
5.	How do you rate the value added courses / certification programs incorporated in syllabus to learn new life skills for employability?	GOOD	93	We will ensure to enhance the employability and life skills of the students with numerous add on and value added courses.
6.	Did the institution provide adequate facilities for co-curricular and extracurricular activities?	EXCELLENT	96	We appreciate the feedback and we will come up with more co curricular and extracurricular activities for the holistic development of the student.
7.	How do you rate the academic initiatives taken by the college to bridge the gap between industry and academia?	GOOD	93	We value the feedback and we will assure more add on courses to bridge gap between industry and academia if any.
8.	Overall, how satisfied were you with the academics and ambience of the institution during your time as a student?	EXCELLENT	96	We appreciate the feedback and we will update the infrastructure facilities as per the needs.


PRINCIPAL
JOGINPALLY B.R. PHARMACY COLLEGE
 Yenkapally (V), Moinabad (M),
 R.R. Dist., Hyderabad-500 075. T.S.



Name of the stake holder: Employer

S.NO	QUESTION	OVER ALL FEEDBACK	FEEDBACK PERCENTAGE	ACTION TAKEN
1.	How well do you feel the curriculum of the institution aligns with the industry requirements and job market expectations?	GOOD	90	We value the feedback and we will continuously work for overall development of the student as per current needs.
2.	Are the graduates equipped with the necessary skills and knowledge relevant to their field of study?	GOOD	92	It is instructed to plan more hands on training programmes to improve student practical skills beyond syllabus.
3.	Are the graduates able to demonstrate critical thinking, problem-solving and other essential skills required for the job?	GOOD	90	It is instructed to conduct more mini projects to enhance experiential learning.
4.	How would you rate the students flexibility in learning new techniques, adopting new ideas etc ?	GOOD	92	We value the feedback and we will assure more add on courses to bridge gap between industry and academia if any.
5.	How do you rate the institutional ambience which facilitated students to exhibit good team spirit and leadership qualities due to participation in co & extracurricular activities?	GOOD	92	We value the feedback and we will come up with more co curricular and extracurricular activities for the holistic development of the student.
6.	How do you rate the self learning facilitated by institution by providing certification programs and laboratory practices that helps acquire advanced knowledge and skills?	GOOD	92	We will ensure to enhance the employability and life skills of the students with different workshops, add on and value added courses to bridge gap between industry and academia.
7.	How do you rate the potential of the curriculum to support the need of society in terms of ethics, healthcare, environment sustainability?	GOOD	90	Along with curriculum we have planned value added ,soft skill courses, workshops and awareness programmes for the holistic development of the student.
8.	Are the students able to engage in the continuing professions and achieve high positions that accelerate their career growth?	GOOD	92	We will ensure to enhance the employability and life skills of the students with different workshops ,add on and value added courses.



Jogin
PRINCIPAL
JOGINPALLY B.R. PHARMACY COLLEGE
 Yankapally (V), Moinabad (M),
 Dist., Hyderabad-500 075. T.S.

all the
PRINCIPAL
JOGINPALLY B.R. PHARMACY COLLEGE
 Yankapally (V), Moinabad (M),
 B.R. Dist., Hyderabad-500 075. T.S.



JOGINPALLY B.R. PHARMACY COLLEGE

(Approved by AICTE & Affiliated to JNTU, Hyderabad)
ISO 9001:2015 Certified, Estd-2007

Bhaskar Nagar, Yenkapally (V), Moinabad (M), R.R. District, Hyderabad - 500 075. TS
Phone : 9573544966 / 9052073434 / 9966883793 / 08413-235058

JNTUH(DQ)

EAMCET CODE : JBCP

STUDENT FEEDBACK ON CURRICULUM ACADEMIC YEAR 2022-2023

OBJECTIVE OF FEEDBACK

The institution aims to offer best possible ambience and learning experience to achieve academic excellence and professional competency. Stake holders such as students, teachers, alumni and employers play an important role in the enhancement quality of learning process. Hence the institution collects feedback from all stakeholders i.e. students, teachers, alumni and employers for every academic year on institutional curriculum and ambience to improve the quality of the learning activities in college for better professional skills, employ ability and entrepreneurial skills of the students.

STUDENT FEEDBACK

The student feedback on curriculum is designed to get feedback from students which can be used for the improvement of the quality of learning.

STUDENT FEED BACK ANALYSIS

The student feedback on curriculum was taken from students of B. Pharmacy, Pharm D and M. Pharmacy at the end of each semester /year.

PM
24/12/22
Dr. M. AJITHA
M.Pharm., Ph.D.
PROFESSOR
CPS, IST, JNT University
Kukatpally, Hyderabad-500 085

SUMMARY OF FEEDBACK OBTAINED

S.NO	STAKEHOLDERS	NO. OF FEEDBACK ANALYSED
1.	Students	13
2.	Teachers	7
3.	Alumni	6
4.	Employer	4

[Signature]
IQAC COORDINATOR
CO-ORDINATOR
IQAC
JOGINPALLY B.R. PHARMACY COLLEGE



[Signature]
PRINCIPAL
JOGINPALLY B.R. PHARMACY COLLEGE
Yenkapally (V), Moinabad (M),
R.R. Dist., Hyderabad - 500 075, T.S.

JOGINPALLY B.R. PHARMACY COLLEGE

(Approved by AICTE & Affiliated to JNTU, Hyderabad)
ISO 9001:2015 Certified, Estd-2007

Bhaskar Nagar, Yenkapally (V), Moinabad (M), R.R. District, Hyderabad - 500 075. TS
Phone : 9573544966 / 9052073434 / 9966883793 / 08413-235058

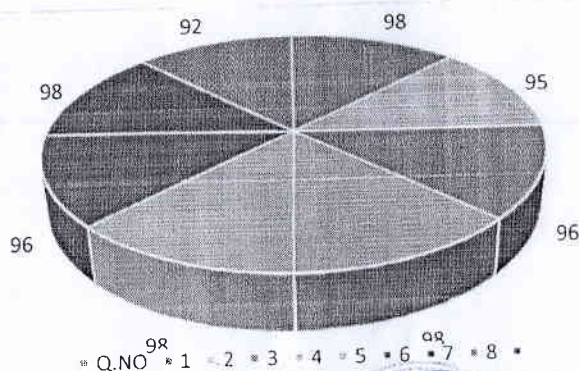


EAMCET CODE : JBCP

STUDENT FEEDBACK AND ANALYSIS ON CURRICULUM 2022-2023

S.NO	QUESTIONNAIRE	AVERAGE SCALE	FEEDBACK %
1.	Does the curriculum meet present day requirements of industry?	3.9	98
2.	How do you rate the overall learning value in terms of knowledge, concepts, Analytical abilities and broadening perspectives?	3.7	95
3.	Is there a good balance between theory and laboratory components in the curriculum?	3.8	96
4.	Did the curriculum incorporate any curricular enrichment practices such as add-on courses, instrumental training, soft-skill modules?	3.9	98
5.	Were the classrooms and other learning spaces well-maintained and equipped with necessary facilities?	3.9	98
6.	How would you rate the availability and accessibility of resources such as libraries, computer, pharmacy labs and study areas?	3.8	96
7.	How responsive and helpful were the administrative staff and support services in addressing your needs and concerns?	3.9	98
8.	Does the college provide adequate opportunities for participation in co-curricular and extracurricular activities?	3.6	92

STUDENT FEEDBACK ANALYSIS ON CURRICULUM A.Y. 2022-2023



12/4/2023

Dr. M.AJITHA
M.Pharm., Ph.D.
PROFESSOR
CPS, IST, JNT University
Kukatpally, Hyderabad-500 085

IQAC COORDINATOR
IQAC
JOGINPALLY B.R. PHARMACY COLLEGE



PRINCIPAL
JOGINPALLY B.R. PHARMACY COLLEGE
Yenkapally (V), Moinabad (M),
R.R. Dist., Hyderabad-500 075, TS



JBRPC

JOGINPALLY B.R. PHARMACY COLLEGE

(Approved by AICTE & Affiliated to JNTU, Hyderabad)

ISO 9001:2015 Certified, Estd-2007

Bhaskar Nagar, Yenkapally (V), Moinabad (M), R.R. District, Hyderabad - 500 075. TS

Phone : 9573544966 / 9052073434 / 9966883793 / 08413-235058

JNTUH (DQ)

EAMCET CODE : JBCP

TEACHER FEEDBACK ON CURRICULUM ACADEMIC YEAR 2022-2023

OBJECTIVE OF FEEDBACK

The institution aims to offer best possible ambience and learning experience to achieve academic excellence and professional competency. Stake holders such as students, teachers, alumni and employers play an important role in the enhancement quality of learning process. Hence the institution collects feedback from all stakeholders i.e. students, teachers, alumni and employers for every academic year on institutional curriculum and ambience to improve the quality of the learning activities in college for better professional skills, employ ability and entrepreneurial skills of the students.

TEACHER FEEDBACK

Teachers play an important role in the execution of curriculum hence collecting feedback from faculty on curriculum is the most important to improve quality of learning.

TEACHER FEED BACK ANALYSIS

The feedback on curriculum was taken from the teachers dealing with B. Pharmacy, Pharm D and M. Pharmacy courses at the end of each semester /year.

SUMMARY OF FEEDBACK OBTAINED

S.NO	STAKEHOLDERS	NO. OF FEEDBACK ANALYSED
1.	Students	13
2.	Teachers	7
3.	Alumni	6
4.	Employer	4

12/11/2023

Dr. M.AJITHA
M.Pharm., Ph.D.
PROFESSOR
CPS, IST, JNT University
Kukatpally, Hyderabad-500 085

IQAC COORDINATOR

CO-ORDINATOR
IQAC

JOGINPALLY B.R. PHARMACY COLLEGE



PRINCIPAL
PRINCIPAL

JOGINPALLY B.R. PHARMACY COLLEGE
Yenkapally (V), Moinabad (M),
R.R. Dist., Hyderabad - 50075, TS.



JOGINPALLY B.R. PHARMACY COLLEGE

(Approved by AICTE & Affiliated to JNTU, Hyderabad)

ISO 9001:2015 Certified, Estd-2007

Bhaskar Nagar, Yenkapally (V), Moinabad (M), R.R. District, Hyderabad - 500 075, TS

Phone : 9573544966 / 9052073434 / 9966883793 / 08413-235058

JNTUH (DQ)

EAMCET CODE : JBCP

ALUMNI FEEDBACK ON CURRICULUM ACADEMIC YEAR 2022-2023

OBJECTIVE OF FEEDBACK

The institution aims to offer best possible ambience and learning experience to achieve academic excellence and professional competency. Stake holders such as students, teachers, alumni and employers play an important role in the enhancement quality of learning process. Hence the institution collects feedback from all stakeholders i.e. students, teachers, alumni and employers for every academic year on institutional curriculum and ambience to improve the quality of the learning activities in college for better professional skills, employ ability and entrepreneurial skills of the students.

ALUMNI FEEDBACK

Alumni feedback provides inputs regarding well-structured questionnaire was designed and collected data from the alumni of the college. Feedback collected from alumni on curriculum of institution is useful for enhancing steps towards learning environment.

ALUMNI FEED BACK ANALYSIS

The data is analyzed and suggestions are considered for possible implementation of curriculum delivery.

SUMMARY OF FEEDBACK OBTAINED

S.NO	STAKEHOLDERS	NO. OF FEEDBACK ANALYSED
1.	Students	13
2.	Teachers	7
3.	Alumni	6
4.	Employer	4

12/11/2023

Dr. M. AJITHA
M.Pharm., Ph.D.
PROFESSOR
GPS, IST, JNT University
Kukatpally, Hyderabad-500 085

[Signature]
IQAC COORDINATOR

CO-ORDINATOR
IQAC

JOGINPALLY B.R. PHARMACY COLLEGE



[Signature]
PRINCIPAL

PRINCIPAL

JOGINPALLY B.R. PHARMACY COLLEGE
Yenkapally (V), Moinabad (M),
R.R. Dist., Hyderabad-500 075, T.S.



JOGINPALLY B.R. PHARMACY COLLEGE

(Approved by AICTE & Affiliated to JNTU, Hyderabad)

ISO 9001:2015 Certified, Estd-2007

Bhaskar Nagar, Yenkapally (V), Moinabad (M), R.R. District, Hyderabad - 500 075. TS

Phone : 9573544966 / 9052073434 / 9966883793 / 08413-235058

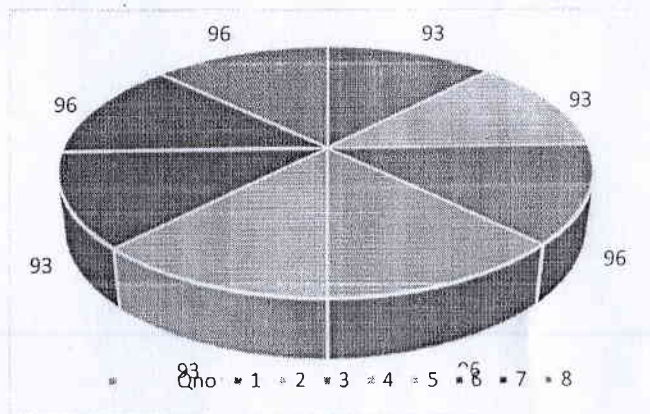
JNTUH(DQ)

EAMCET CODE : JBCP

ALUMNI FEEDBACK AND ANALYSIS ON CURRICULUM 2022-2023

S.NO	QUESTIONNAIRE	AVERAGE SCALE	FEEDBACK %
1.	Does the programme attributes to overall personality development/professional skills/employ ability?	3.6	93
2.	How do you rate the learning experience in terms of their relevance to the real life application?	3.6	93
3.	Does the program inculcates theoretical concept of syllabus in practical and theory?	3.8	96
4.	How would you rate the relevance of the courses that you have studied in the college in relation to your current job/occupation?	3.8	96
5.	How do you rate the value added courses / certification programs incorporated in syllabus to learn new life skills for employ ability?	3.6	93
6.	Did the institution provide adequate facilities for co-curricular and extracurricular activities?	3.8	96
7.	How do you rate the academic initiatives taken by the college to bridge the gap between industry and academia?	3.6	93
8.	Overall, how satisfied were you with the academics and ambience of the institution during your time as a student?	3.8	96

ALUMNI FEEDBACK ANALYSIS ON CURRICULUM 2022-2023



Handwritten signature and date: 12/4/2022

Dr. M.AJITHA
M.Pharm., Ph.D.
PROFESSOR
CPS, IST, JNT University
Kukatpally, Hyderabad-500 0

Handwritten signature
IQAC COORDINATOR
CO-ORDINATOR
IQAC
JOGINPALLY B.R. PHARMACY COLLEGE



Handwritten signature
PRINCIPAL
PRINCIPAL
JOGINPALLY B.R. PHARMACY COLLEGE
Yenkapally (V), Moinabad (M),
R.R. District, Hyderabad - 500 075, T.S.



JOGINPALLY B.R. PHARMACY COLLEGE

(Approved by AICTE & Affiliated to JNTU, Hyderabad)
ISO 9001:2015 Certified, Estd-2007

Bhaskar Nagar, Yenkapally (V), Moinabad (M), R.R. District, Hyderabad - 500 075. TS
Phone : 9573544966 / 9052073434 / 9966883793 / 08413-235058

JNTUH (DQ)

EAMCET CODE : JBCP

EMPLOYER FEEDBACK ON CURRICULUM ACADEMIC YEAR 2022-2023

OBJECTIVE OF FEEDBACK

The institution aims to offer best possible ambience and learning experience to achieve academic excellence and professional competency. Stake holders such as students, teachers, alumni and employers play an important role in the enhancement quality of learning process. Hence the institution collects feedback from all stakeholders i.e. students, teachers, alumni and employers for every academic year on institutional curriculum and ambience to improve the quality of the learning activities in college for better professional skills, employ ability and entrepreneurial skills of the students.

EMPLOYER FEEDBACK

Feedback of the employer gives input regarding enhancement of employability of students and to enrich curriculum as per the current requirement of industry.

EMPLOYER FEED BACK ANALYSIS

The data is analyzed and suggestions are considered for possible implementation of curriculum delivery.

S.NO	STAKEHOLDERS	NO. OF FEEDBACK ANALYSED
1.	Students	13
2.	Teachers	7
3.	Alumni	6
4.	Employer	4

M
12/11/2023

Dr. M. AJITHA
M:Pharm., Ph.D.
PROFESSOR
CPS, IST, JNT University
Kukatpally, Hyderabad-500 085

Zirid
IQAC COORDINATOR
CO-ORDINATOR
IQAC
JOGINPALLY B.R. PHARMACY COLLEGE



M
PRINCIPAL
PRINCIPAL
JOGINPALLY B.R. PHARMACY COLLEGE
Yenkapally (V), Moinabad (M),
R.R. District, Hyderabad - 500 075, TS.



JOGINPALLY B.R. PHARMACY COLLEGE

(Approved by AICTE & Affiliated to JNTU, Hyderabad)
ISO 9001:2015 Certified, Estd-2007

Bhaskar Nagar, Yenkapally (V), Moinabad (M), R.R. District, Hyderabad - 500 075. TS
Phone : 9573544966 / 9052073434 / 9966883793 / 08413-235058

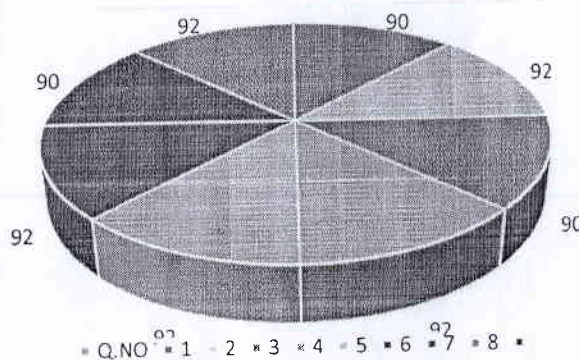
JNTUH(DQ)

EAMCET CODE : JBCP

EMPLOYER FEEDBACK AND ANALYSIS ON CURRICULUM 2022-2023

S.NO	QUESTIONNAIRE	AVERAGE SCALE	FEEDBACK %
1	How well do you feel the curriculum of the institution aligns with the industry requirements and job market expectations?	3.5	90
2.	Are the graduates equipped with the necessary skills and knowledge relevant to their field of study?	3.75	92
3.	Are the graduates able to demonstrate critical thinking, problem-solving and other essential skills required for the job?	3.5	90
4.	How would you rate the students flexibility in learning new techniques, adopting new ideas etc ?	3.75	92
5.	How do you rate the institutional ambience which facilitated students to exhibit good team spirit and leadership qualities due to participation in co&extracurricular activities?	3.75	92
6.	How do you rate the self learning facilitated by institution by providing certification programs and laboratory practices that helps acquire advanced knowledge and skills?	3.75	92
7.	How do you rate the potential of the curriculum to support the need of society in terms of ethics, healthcare, environment sustainability?	3.5	90
8.	Are the students able to engage in the continuing professions and achieve high positions that accelerate their career growth?	3.75	92

EMPLOYER FEEDBACK ANALYSIS ON CURRICULUM 2022-2023



Handwritten signature and date: 12/14/2023

Dr. M.AJITHA
M.Pharm., Ph.D.
PROFESSOR
CPS, IST, JNT University
Kukatpally, Hyderabad-500 08

Handwritten signature
IQAC COORDINATOR



Handwritten signature
PRINCIPAL
JOGINPALLY B.R. PHARMACY COLLEGE
Yenkapally (V), Moinabad (M),
R.R. District, Hyderabad - 500 075, T.S.